



GAT MONTHLY MEMBERSHIP PROGRESS REPORT

Results as of: 4/30/2023

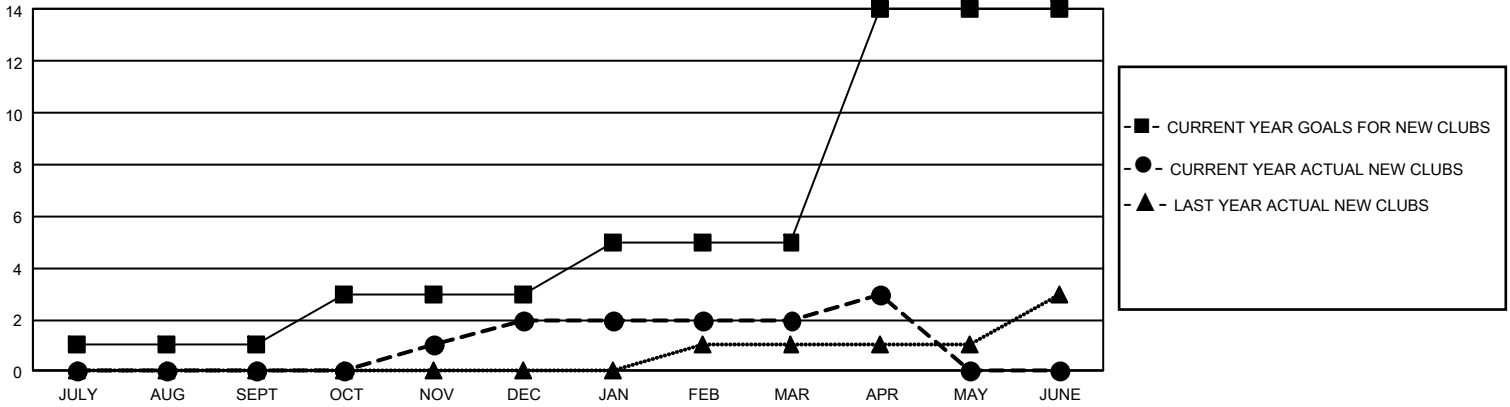
GMT Constitutional Area 1, Group H

REPORT DOES NOT INCLUDE CLUBS IN UNDISTRICTED AREAS.

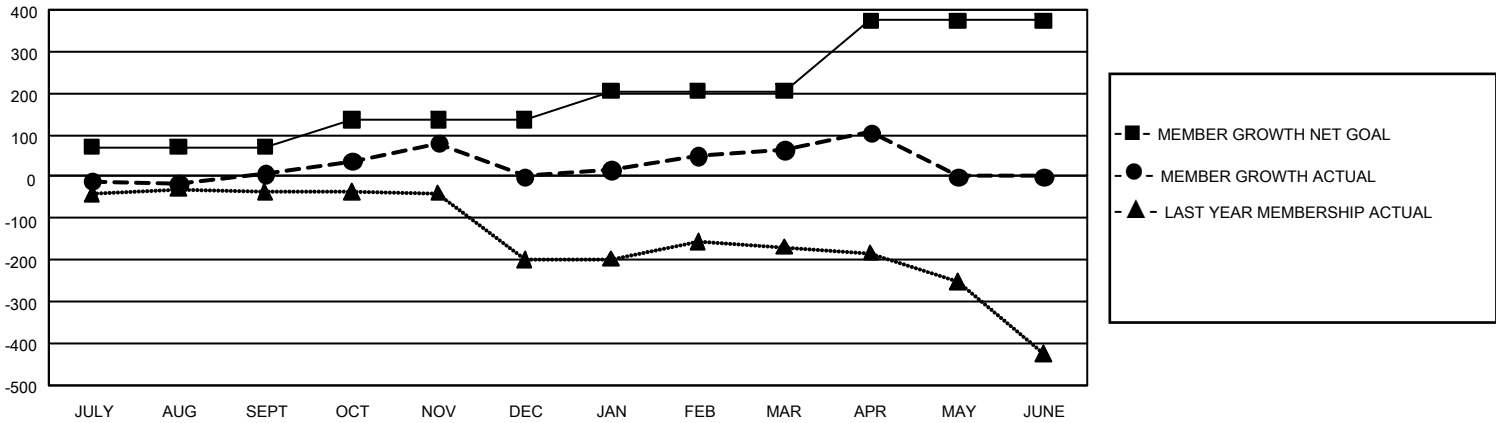
Clubs			
RESULTS FOR 2022-2023			
QUARTER	NEW CLUB GOAL	NEW CLUBS	DROPPED CLUBS
JULY/AUG/SEPT	3	0	2
OCT/NOV/DEC	6	2	2
JAN/FEB/MAR	6	0	2
APR/MAY/JUNE	27	1	1

Members			
RESULTS FOR 2022-2023			
QUARTER	MEMBER GROWTH NET GOAL	MEMBER GROWTH ACTUAL	DROPPED MEMBERS ACTUAL (including transfers)
JULY/AUG/SEPT	71	245	206
OCT/NOV/DEC	65	279	262
JAN/FEB/MAR	69	255	159
APR/MAY/JUNE	169	144	94

GOALS AND ACTUAL NEW CLUBS CUMULATIVE



GOALS AND ACTUAL MEMBERS CUMULATIVE



DROPPED CLUBS: 7 DROPPED MEMBERS DECEASED 94 CLUB CANCELLED 23 OTHER 604 TOTAL 721	188 CLUBS OF 304 ADDED 1 OR MORE NEW MEMBERS	GENDER DISTRIBUTION MALE 3,697 (56.72%) FEMALE 2,819 (43.25%) NON BINARY 0 (0.00%) PREFER NOT TO ANSWER 2 (0.03%)
	CLICK HERE FOR CUMULATIVE MEMBERSHIP DATA	TOTAL FAMILY UNIT MEMBERS 1,567 FAMILY MEMBERS PAYING HALF DUES 815